



THE TREVENTI®

EXOTIC BEAUTY

LIMITED LIFETIME MOTOR WARRANTY

3 40-WATT LIGHT BULBS REQUIRED

Look for these available options:

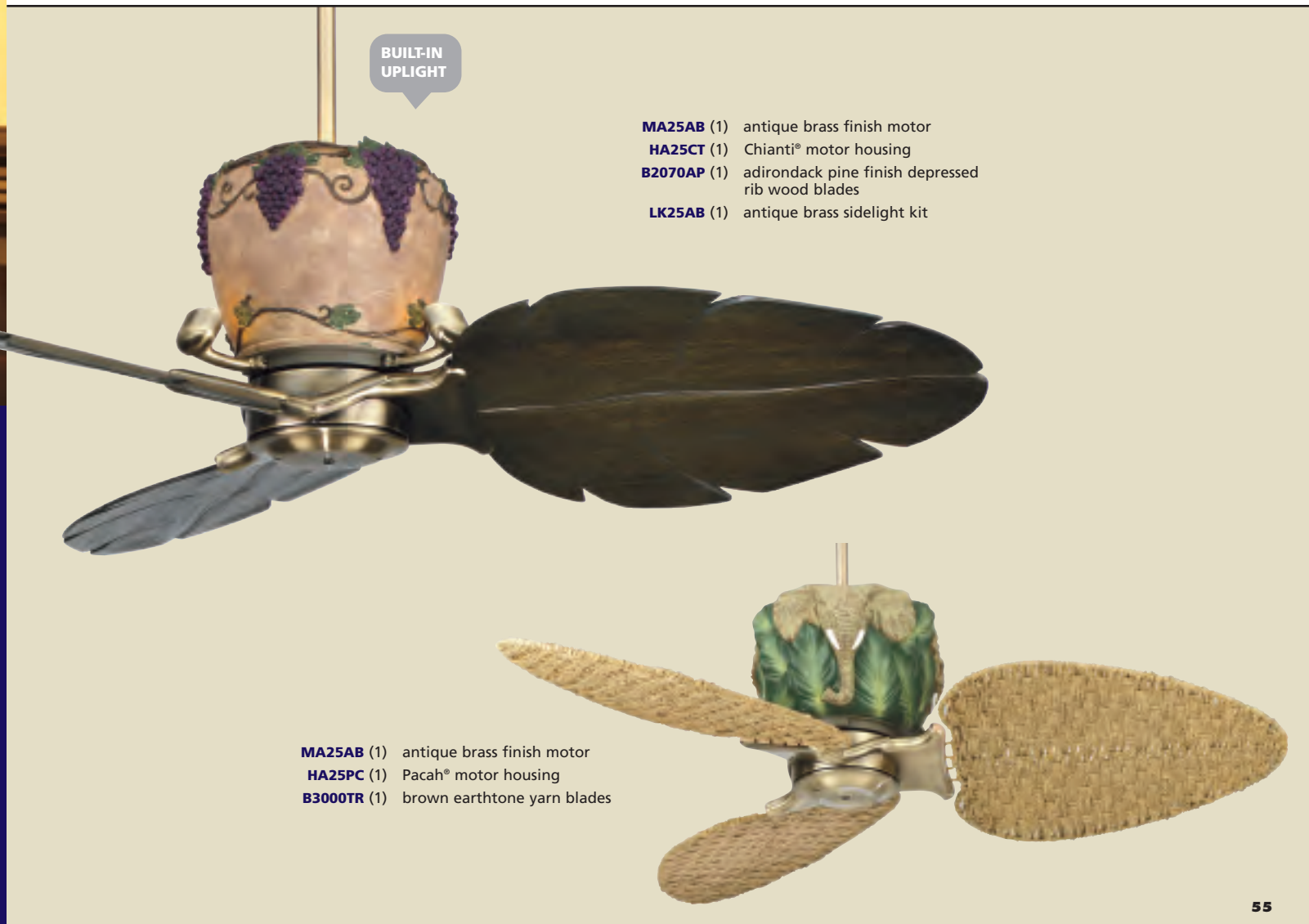


- Available in antique brass, black, matte white, pewter and rust
- 220v motors available in all finishes listed above
- Black, matte white and rust finishes are damp location approved
- Built-in uplight requires three 40-watt candelabra bulbs (bulbs not included)
- Motor housings sold separately (page 60)
- Blade sets sold separately (page 61)
- Three forward and three reverse speeds
- FDK2100 motor with limited lifetime warranty
- Ceiling slope to 30° (up to 52° with SCB52)
- 18° blade pitch
- 80" lead wires
- 7" downrod included, longer lengths available (page 110)
- Control receiver in switch cup
- Includes remote and wall controls (C22 and C23)
- **UL LISTED**



- MA25MW (1) matte white finish motor
◀ damp location approved
- HA25SS (1) Seaside® motor housing
- B3000SS (1) white cross weave wicker blades
- LK515WH (1) trim kit fitter with glass
- TK516SS (1) Seaside trim kit

trā-ven'-tē



BUILT-IN UPLIGHT

- MA25AB (1) antique brass finish motor
- HA25CT (1) Chianti® motor housing
- B2070AP (1) adirondack pine finish depressed rib wood blades
- LK25AB (1) antique brass sidelight kit

- MA25AB (1) antique brass finish motor
- HA25PC (1) Pacah® motor housing
- B3000TR (1) brown earthtone yarn blades

THE TREVENTI®

THE TREVENTI®



LX25RS (1) includes rust finish motor, rust amalfi motor housing and brown cross weave wicker blades
 ◀ damp location approved



MA25BL (1) black finish motor
 ◀ damp location approved
HA25AM (1) Amazon® motor housing
B2040BL (1) black finish carved wood blades
 ◀ not recommended for damp locations
LK25BL (1) black sidelight kit



MA25AB (1) antique brass finish motor
HA25QU (1) Quintana® motor housing
B3000TR (1) brown earthtone yarn blades
LK25AB (1) antique brass sidelight kit



MA25BL (1) black finish motor
 ◀ damp location approved
HA25KM (1) Kimora® motor housing
B2040BL (1) black finish carved wood blades
 ◀ not recommended for damp locations



MA25RS (1) rust finish motor
 ◀ damp location approved
HA25KR (1) Keramos® motor housing
B3000P (1) wide oval palm leaf blades
 ◀ not recommended for damp locations



MA25PW (1) pewter finish motor
HA25PW (1) pewter amalfi motor housing
B2000CP (1) cairo purple/adirondack pine finish wood blades



MA25AB (1) antique brass finish motor
HA25BA (1) Baja® motor housing
B2070PO (1) pickled oak finish carved wood blades
F423AB (1) antique brass fitter
G452 (1) yellow/white swirl glass bowl

THE TREVENTI®

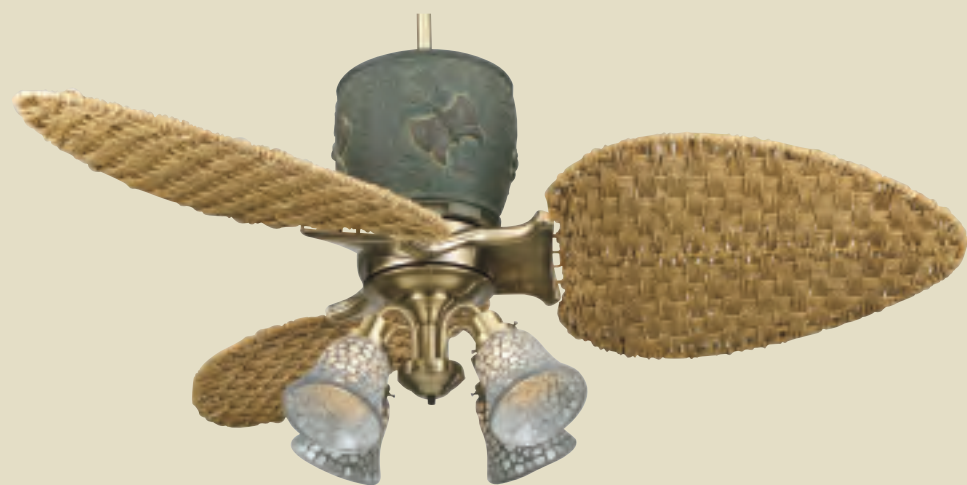
- MA25BL** (1) black finish motor
- ◀ damp location approved
- HA25WA** (1) Wasabi® motor housing
- B2040BL** (1) black finish carved wood blades
- ◀ not recommended for damp locations
- LK25BL** (1) black sidelight kit



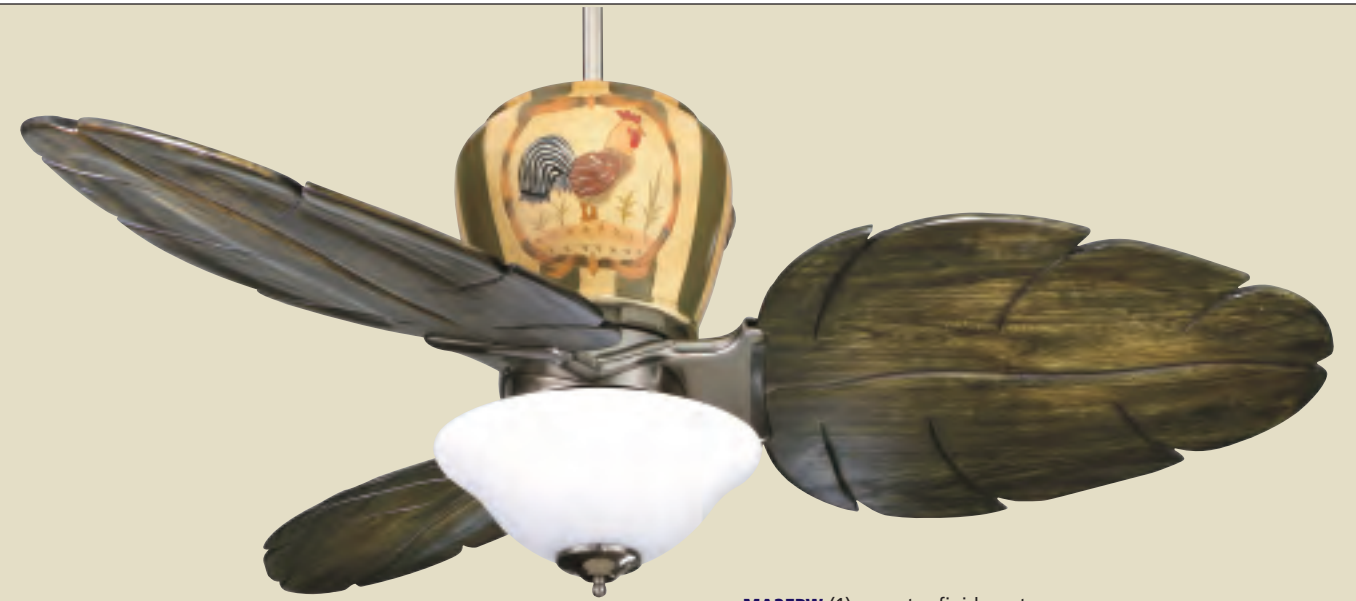
- MA25RS** (1) rust finish motor
- ◀ damp location approved
- HA25IM** (1) Islamorada® motor housing
- B3000IM** (1) brown cross weave wicker blades



- MA25AB** (1) antique brass finish motor
- HA25MR** (1) Mariposa® motor housing
- B3000TR** (1) brown earhtone yarn blades
- F404AB** (1) antique brass 4-light traditional fitter
- G222** (4) clear/frosted mosaic glass



- MA25RS** (1) rust finish motor
- ◀ damp location approved
- HA25TB** (1) Tabago® motor housing
- B2070CP** (1) cairo purple carved wood blades
- ◀ not recommended for damp locations
- F423RS** (1) rust fitter
- G459** (1) rust/cream speckled glass bowl



- MA25PW** (1) pewter finish motor
- HA25TS** (1) Toscano® motor housing
- B2070AP** (1) adirondack pine finish carved wood blades
- F423PW** (1) pewter fitter
- G456** (1) white frost glass bowl

THE TREVENTI®

- MA25BL** (1) black finish motor
- ◀ damp location approved
- HA25ML** (1) Malawi® motor housing
- B2000CP** (1) cairo purple/adirondack pine finish wood blades
- ◀ not recommended for damp locations
- LK25BL** (1) black sidelight kit



- MA25BL** (1) black finish motor
- ◀ damp location approved
- HA25HN** (1) Hennessey™ motor housing
- B2040BL** (1) black finish carved wood blades
- ◀ not recommended for damp locations

THE TREVENTI®

FOLLOW THESE EASY STEPS TO CUSTOMIZE THE TREVENTI®



1 Select a motor finish

Select from antique brass, black, matte white, pewter or rust

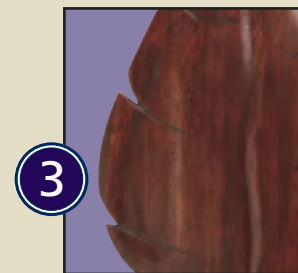
Includes a built-in uplight (three 40-watt candelabra bulbs not included)

Reversing module in switch cup



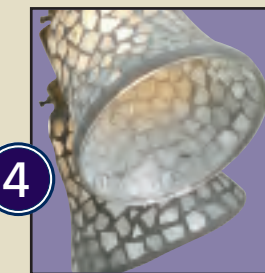
2 Select a housing style

See housing selection on page 60



3 Select a blade set

See blade options on page 61



4 Optional lighting and accessories are available

See lighting options on pages 104-107

See accessories and downrod options on pages 110-111



5 Optional sidelight available

See sidelight options on page 60

HOUSING OPTIONS

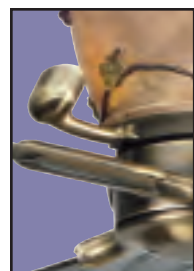
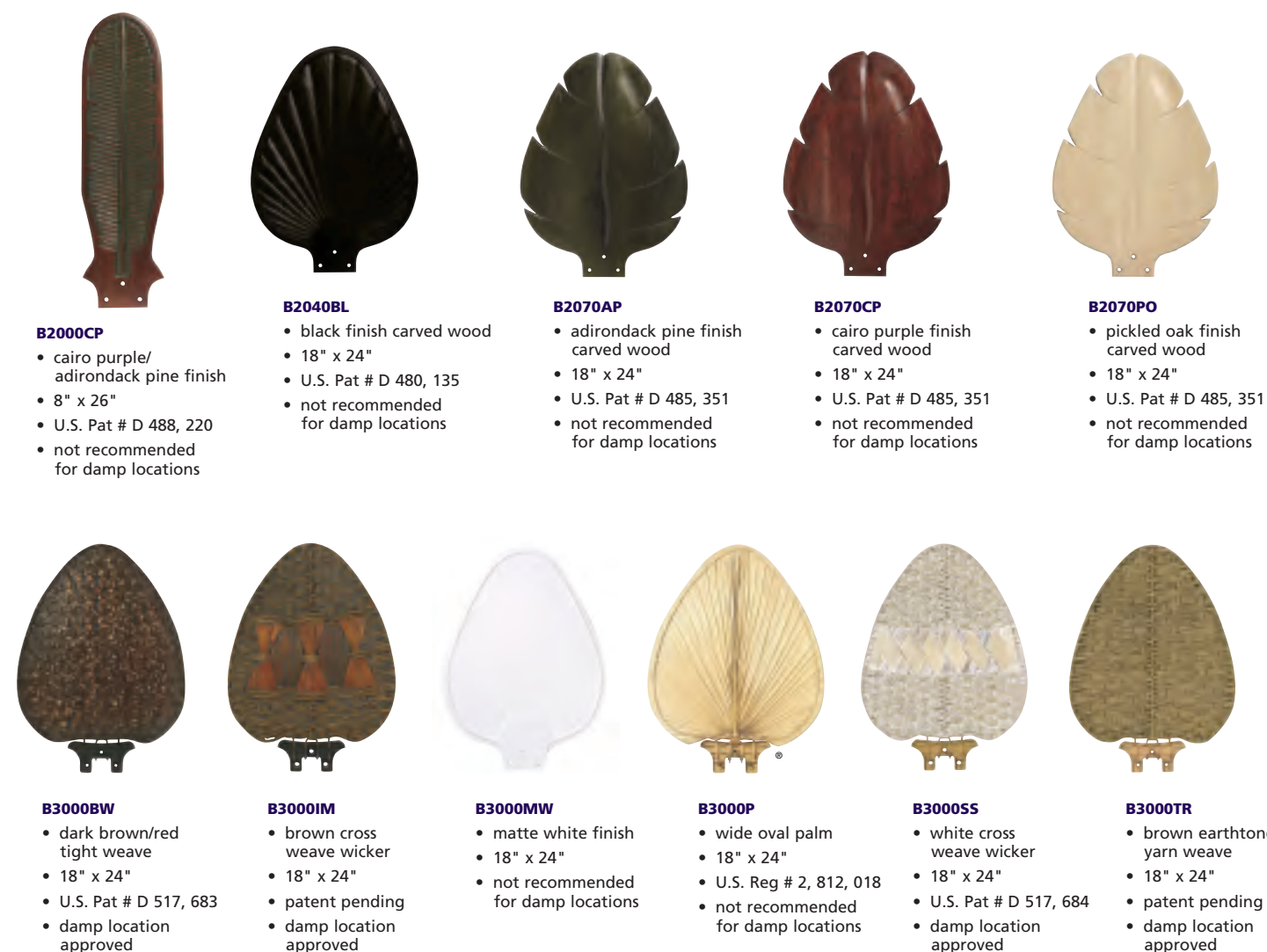
All motor housings © 2006 Fanimation

• For use with MA25 only



BLADE SET OPTIONS

• for use with MA25 only
• blade set includes three blades



LK25 OPTIONAL SIDELIGHT KIT

- Available in antique brass (LK25AB), black (LK25BL), matte white (LK25MW), pewter (LK25PW) and rust (LK25RS)
- For use with MA25 series motors only
- Cannot be used with Amalfi housing
- Includes three T3.25 bulbs
- Replacement bulbs sold separately order catalog number LBT325



C22 AND C23 CONTROLS INCLUDED

- C22 fan and light remote control
- C23 fan and light wall control (2-wire installation, face plate included)
- 3-speed reversing
- Continuous light dimming
- Controls C22 and C23 may be used independently or together